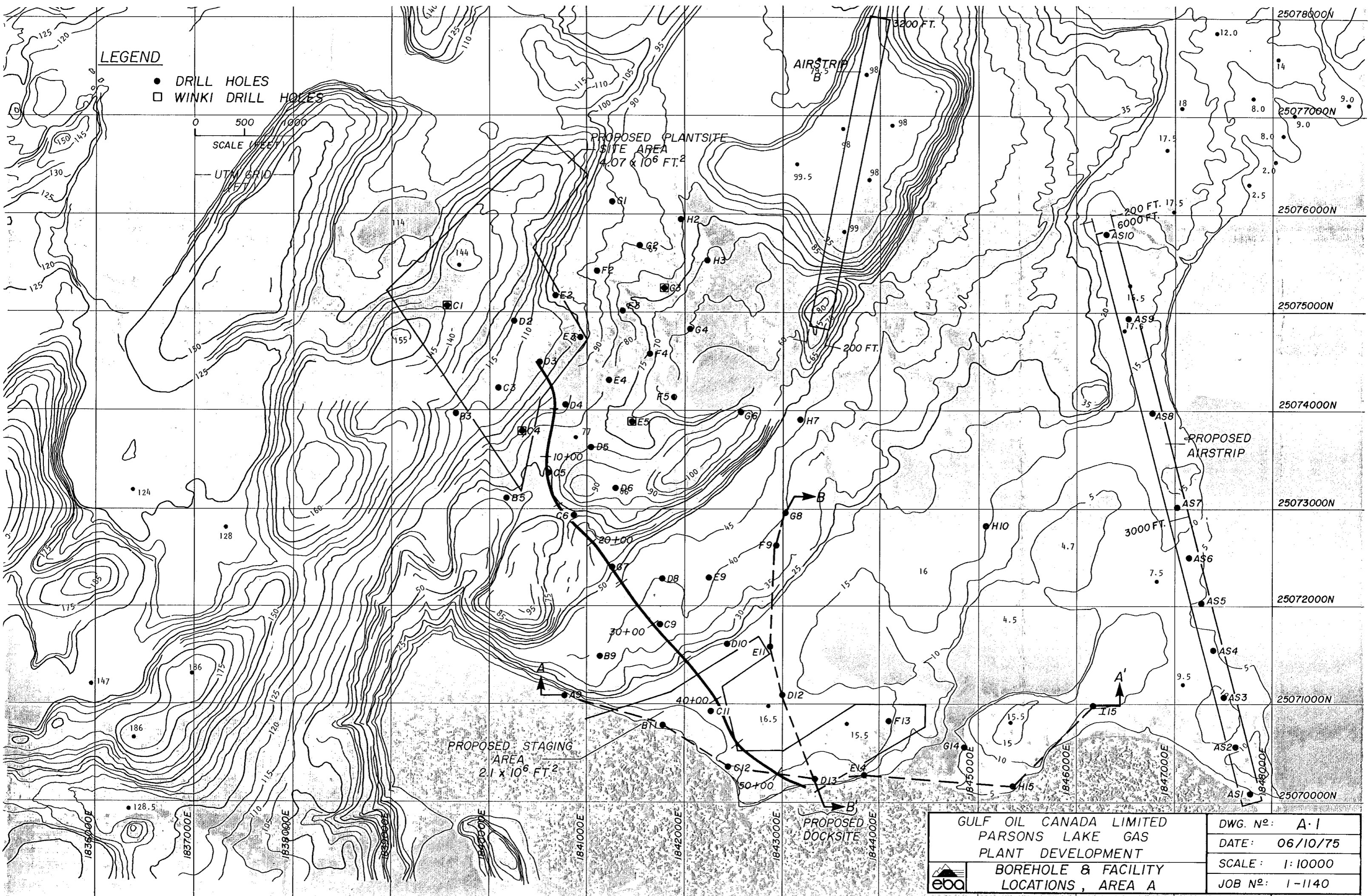
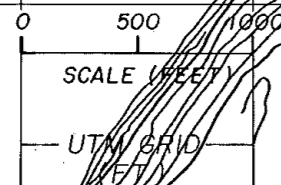
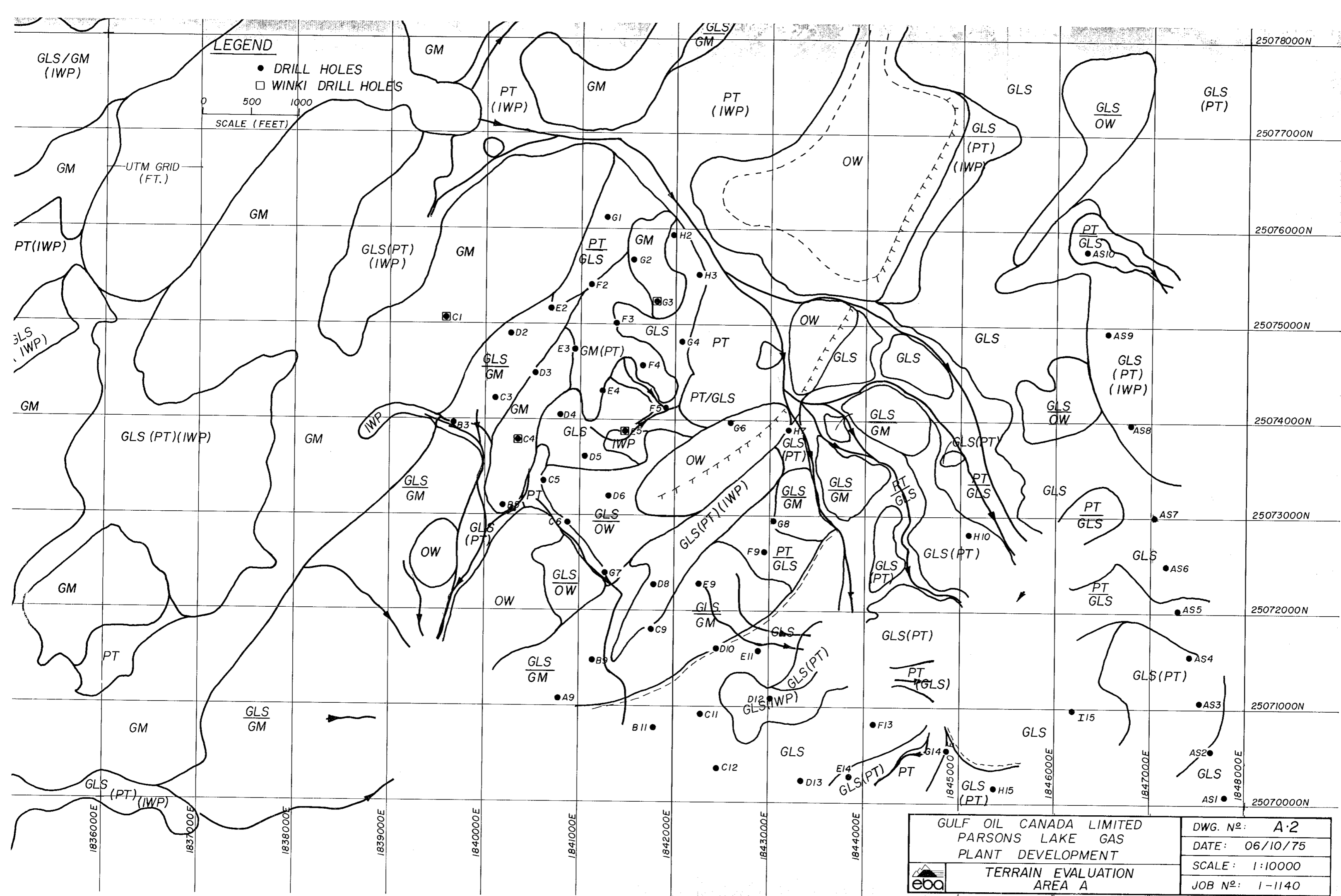



LEGEND

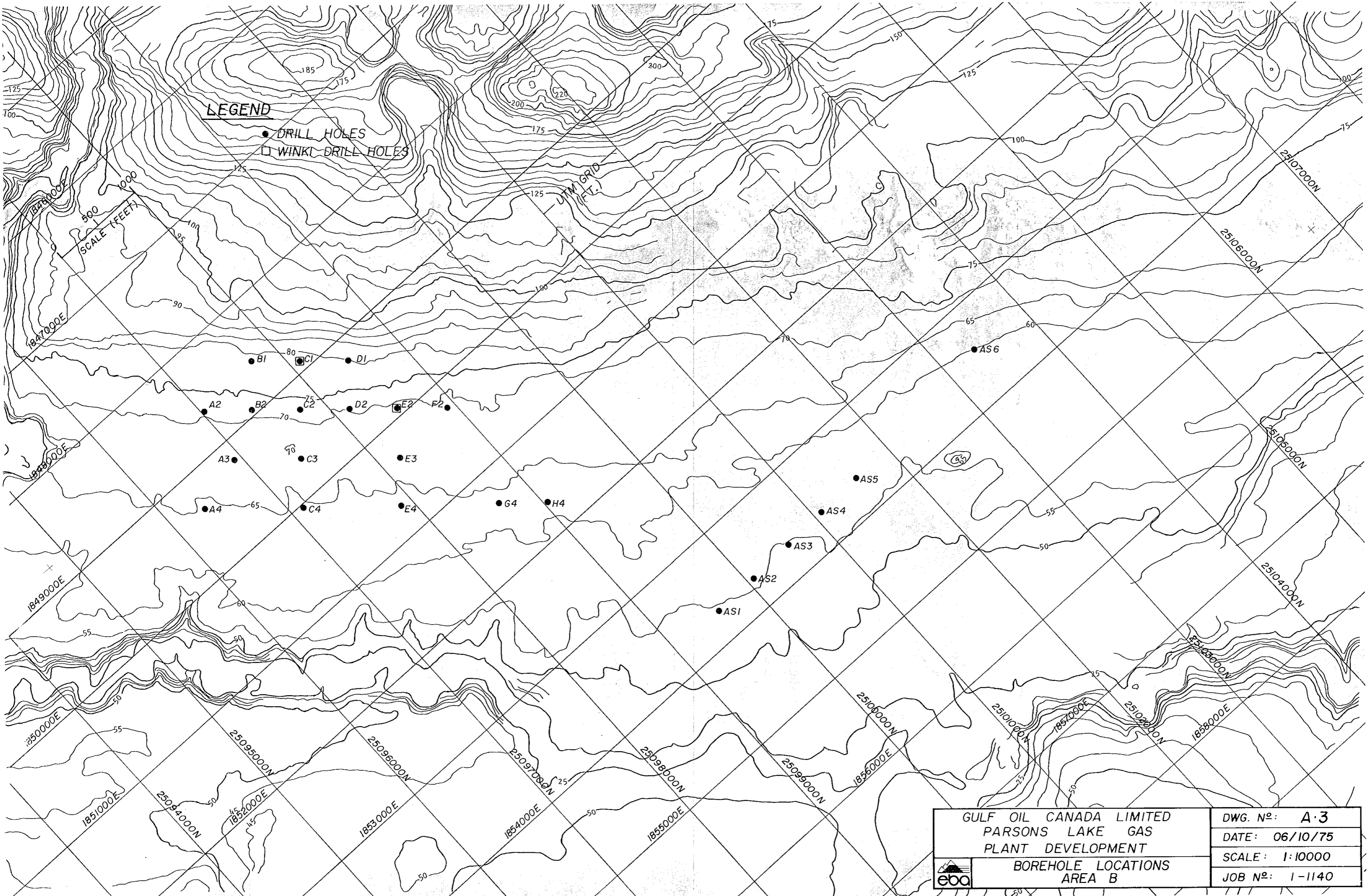
- DRILL HOLES
- WINKI DRILL HOLES



| | | |
|--|--|----------------|
| | GULF OIL CANADA LIMITED | DWG. No: A-1 |
| | PARSONS LAKE GAS | DATE: 06/10/75 |
| | PLANT DEVELOPMENT | SCALE: 1:10000 |
| | BOREHOLE & FACILITY LOCATIONS, AREA A | JOB No: 1-1140 |



| | |
|---|-----------------------------|
| GULF OIL CANADA LIMITED PARSONS LAKE GAS PLANT DEVELOPMENT  | DWG. N ^o : A-2 |
| | DATE: 06/10/75 |
| | SCALE: 1:10000 |
| | JOB N ^o : 1-1140 |




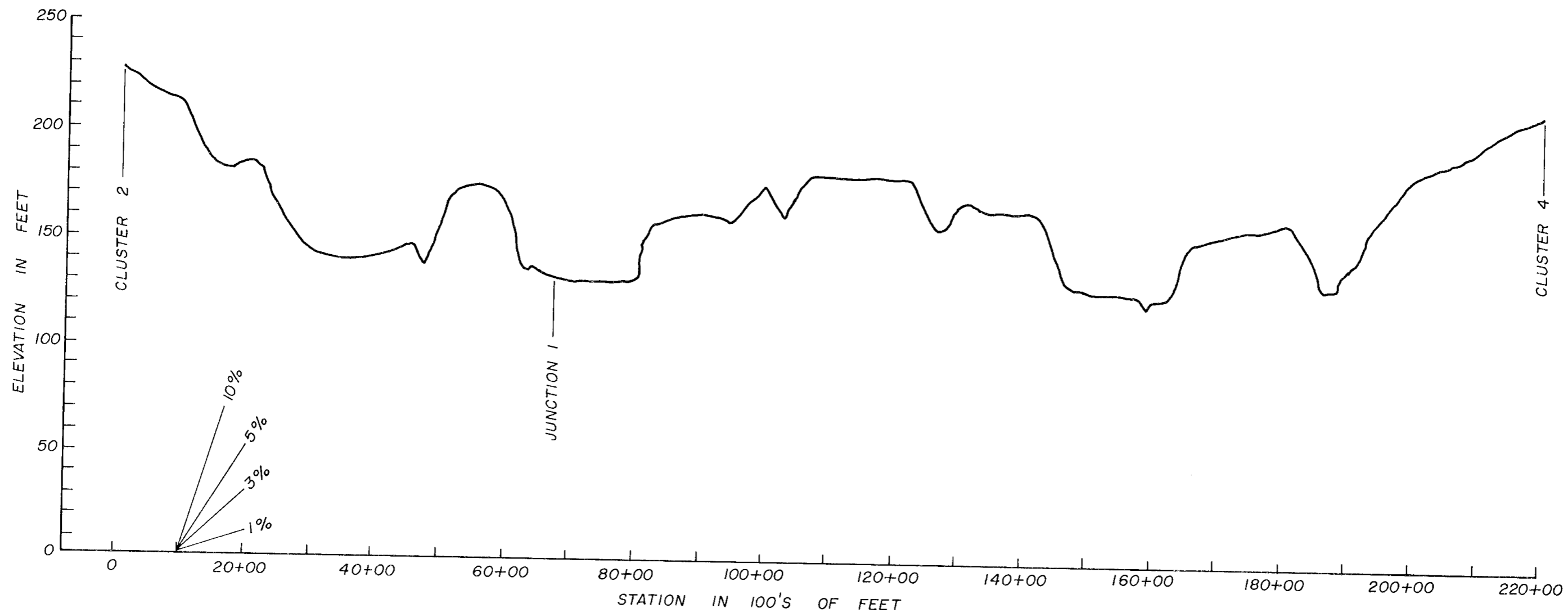
LEGEND

- DRILL HOLES
- WINKI DRILL HOLES


SCALE (FEET)
500

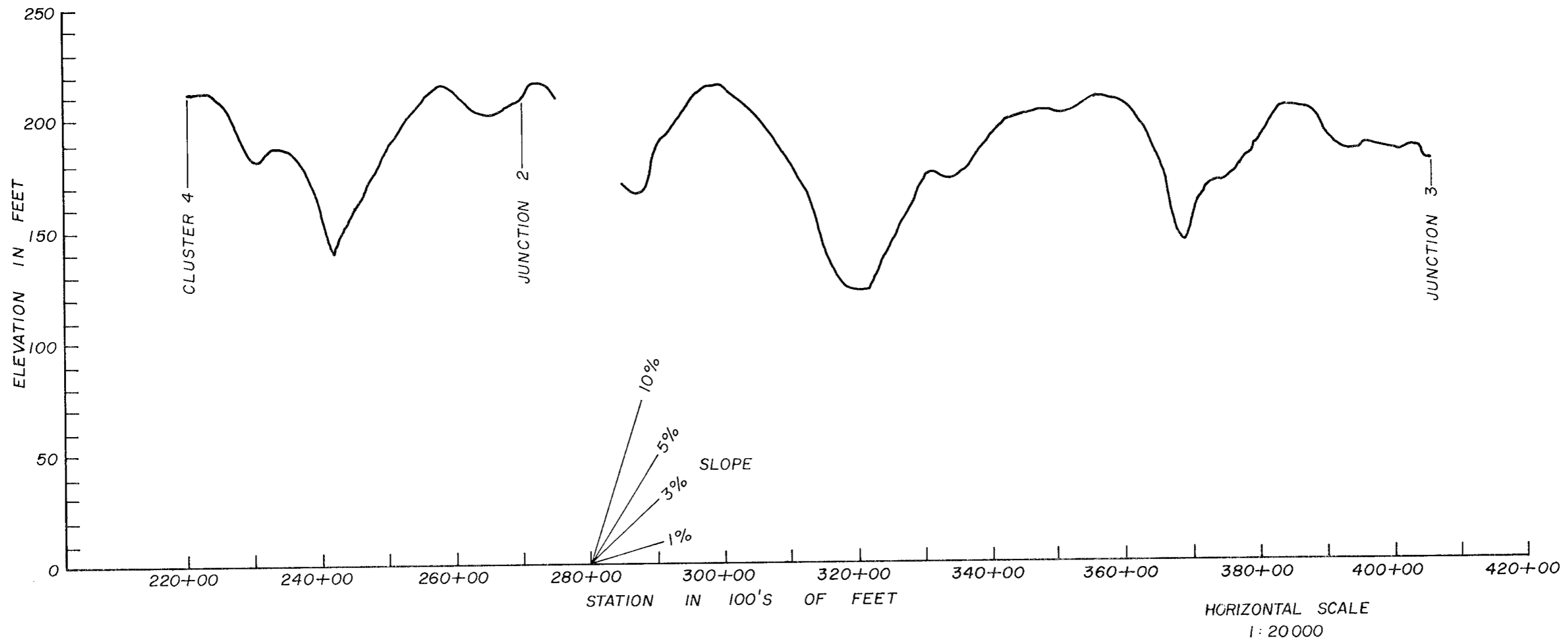
UTM GRID
(F.T.)


| | | |
|---|------------------------------|----------------|
|  | GULF OIL CANADA LIMITED | DWG. No: A-3 |
| | PARSONS LAKE GAS | DATE: 06/10/75 |
| | PLANT DEVELOPMENT | SCALE: 1:10000 |
| | BOREHOLE LOCATIONS AREA B | JOB No: 1-1140 |

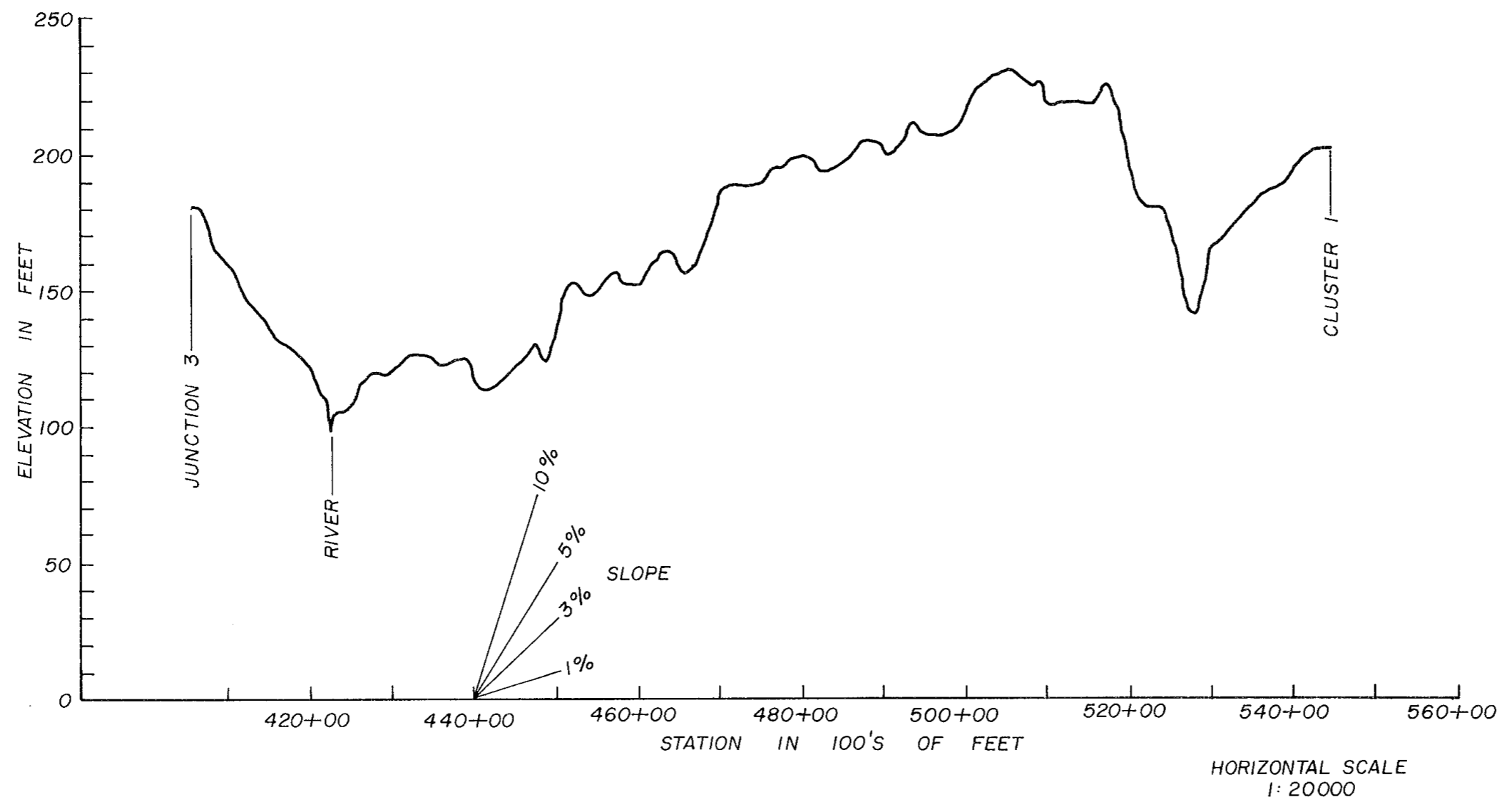



HORIZONTAL SCALE
1:20000

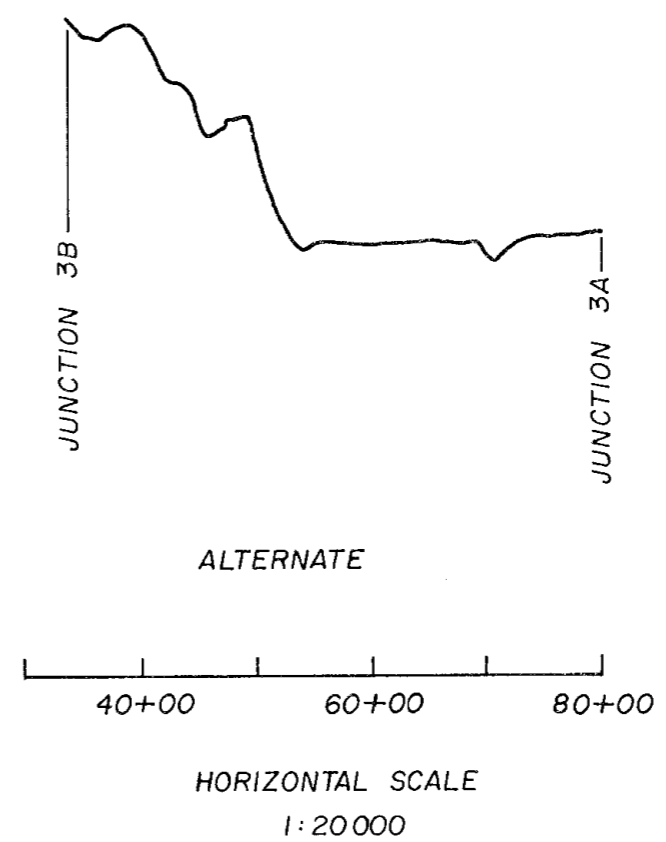
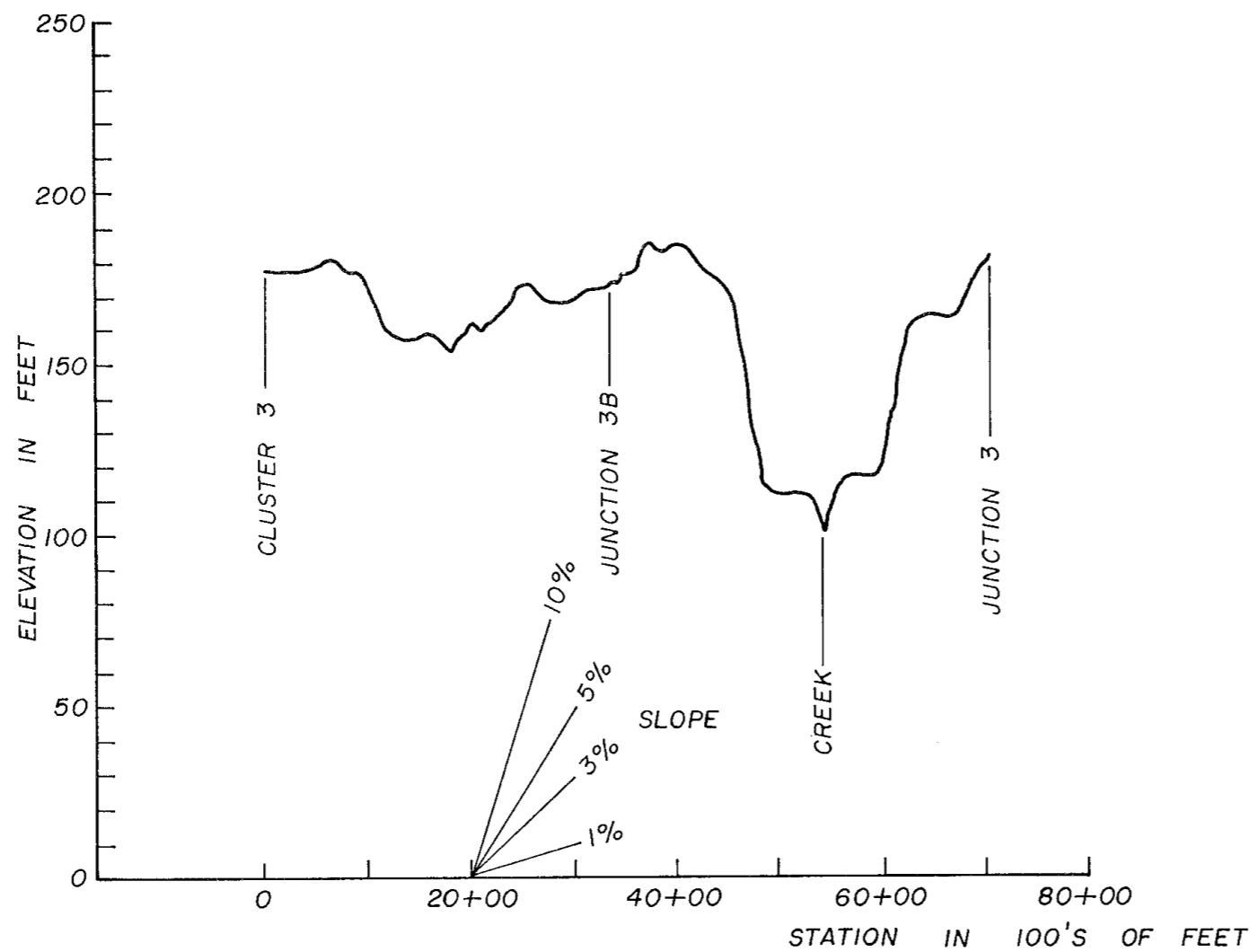
| | | |
|---|------------------------------|-----------------|
|  | GULF OIL CANADA LIMITED | DWG. No: A.5 |
| | PARSONS LAKE GAS | DATE: 07/10/75 |
| | PLANT DEVELOPMENT | SCALE: AS SHOWN |
| | CORRIDOR PROFILE | JOB No: 1-1140 |
| | CLUSTER No.2 TO CLUSTER No.4 | |




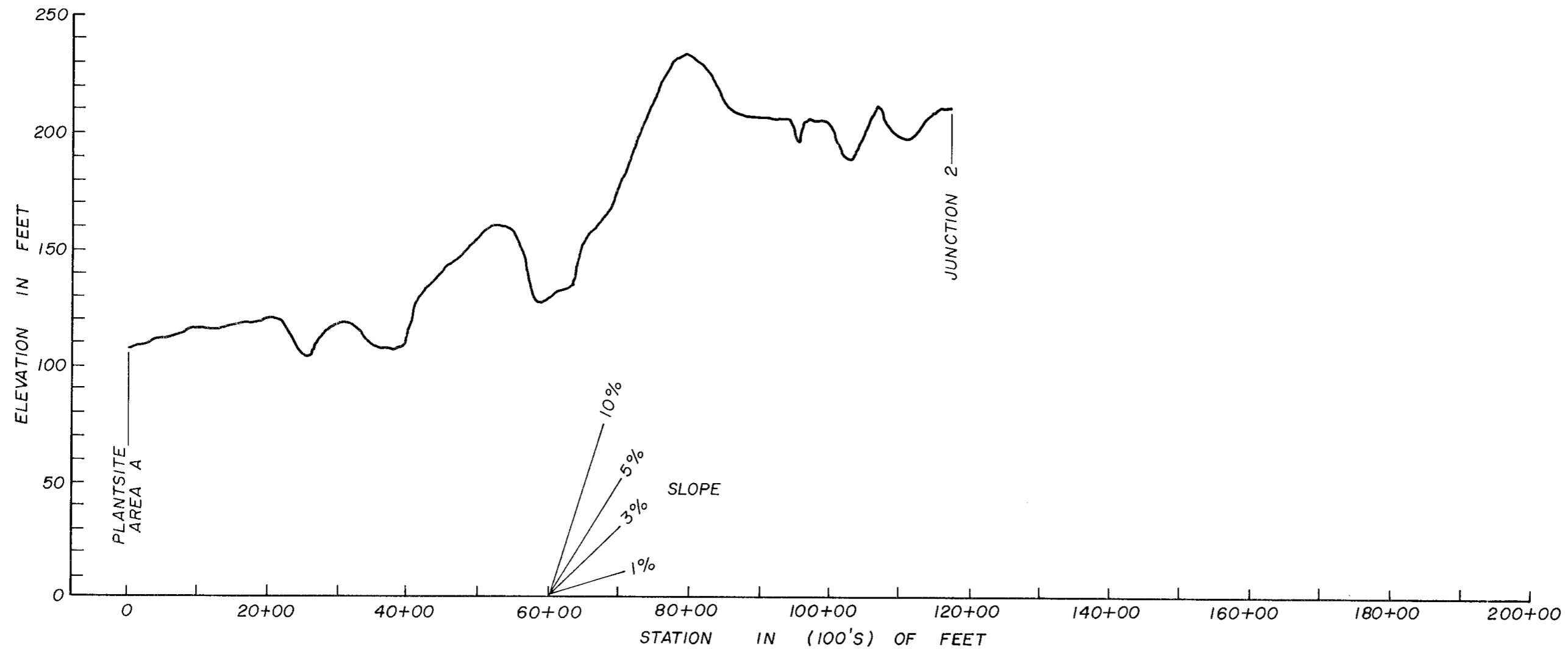
| | | |
|---|--------------------------------|-----------------|
|  | GULF OIL CANADA LIMITED | DWG. No: A.6 |
| | PARSONS LAKE GAS | DATE: 07/10/75 |
| | PLANT DEVELOPMENT | SCALE: AS SHOWN |
| | CORRIDOR PROFILE | JOB No: 1-1140 |
| | CLUSTER No. 4 TO CLUSTER No. 3 | |




| | | |
|---|-------------------------|-----------------|
|  | GULF OIL CANADA LIMITED | DWG. No: A.7 |
| | PARSONS LAKE GAS | DATE: 07/10/75 |
| | PLANT DEVELOPMENT | SCALE: AS SHOWN |
| | CORRIDOR PROFILE | JOB No: 1-1140 |
| JUNCTION No.3 TO CLUSTER No.1 | | |

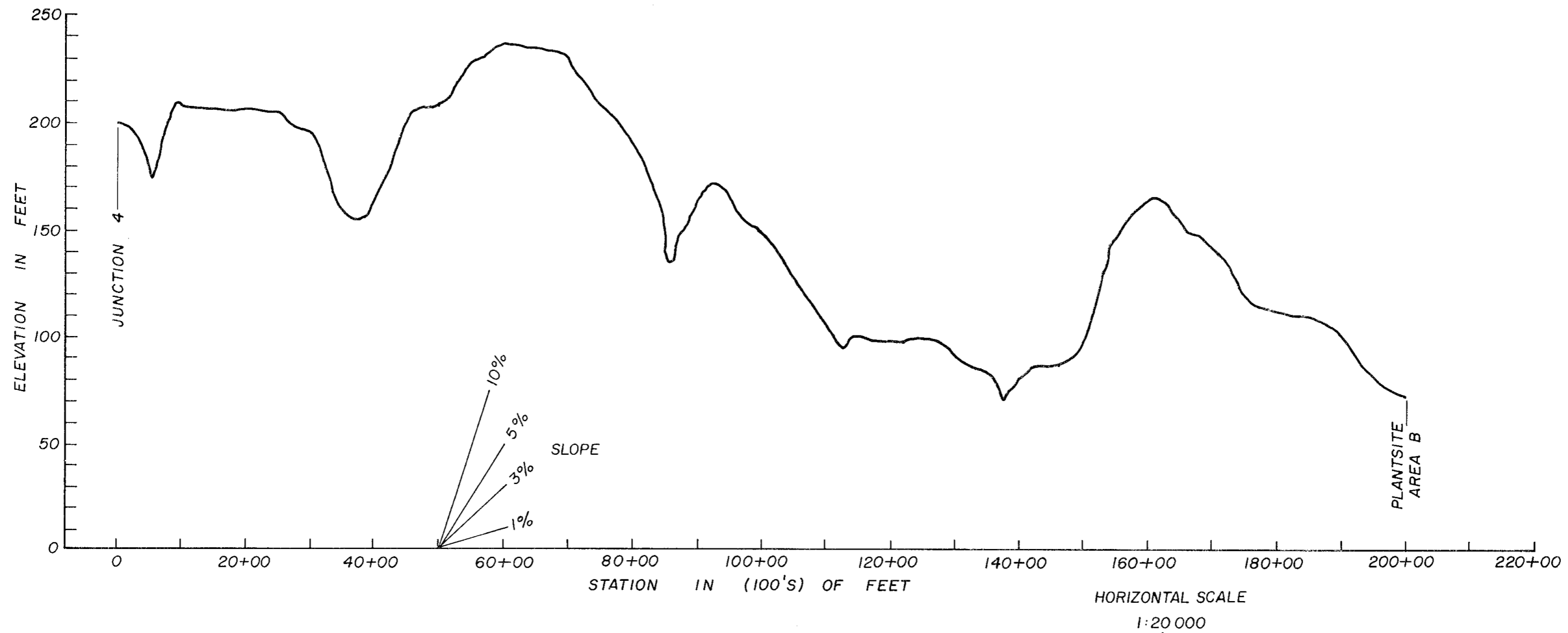



| | |
|--|-----------------|
|  GULF OIL CANADA LIMITED PARSONS LAKE GAS PLANT DEVELOPMENT CORRIDOR PROFILE JCT. Nos. 3 AND 3B TO CLUSTER No.1 | DWG. No: A.8 |
| | DATE: 07/10/75 |
| | SCALE: AS SHOWN |
| | JOB No: 1-1140 |

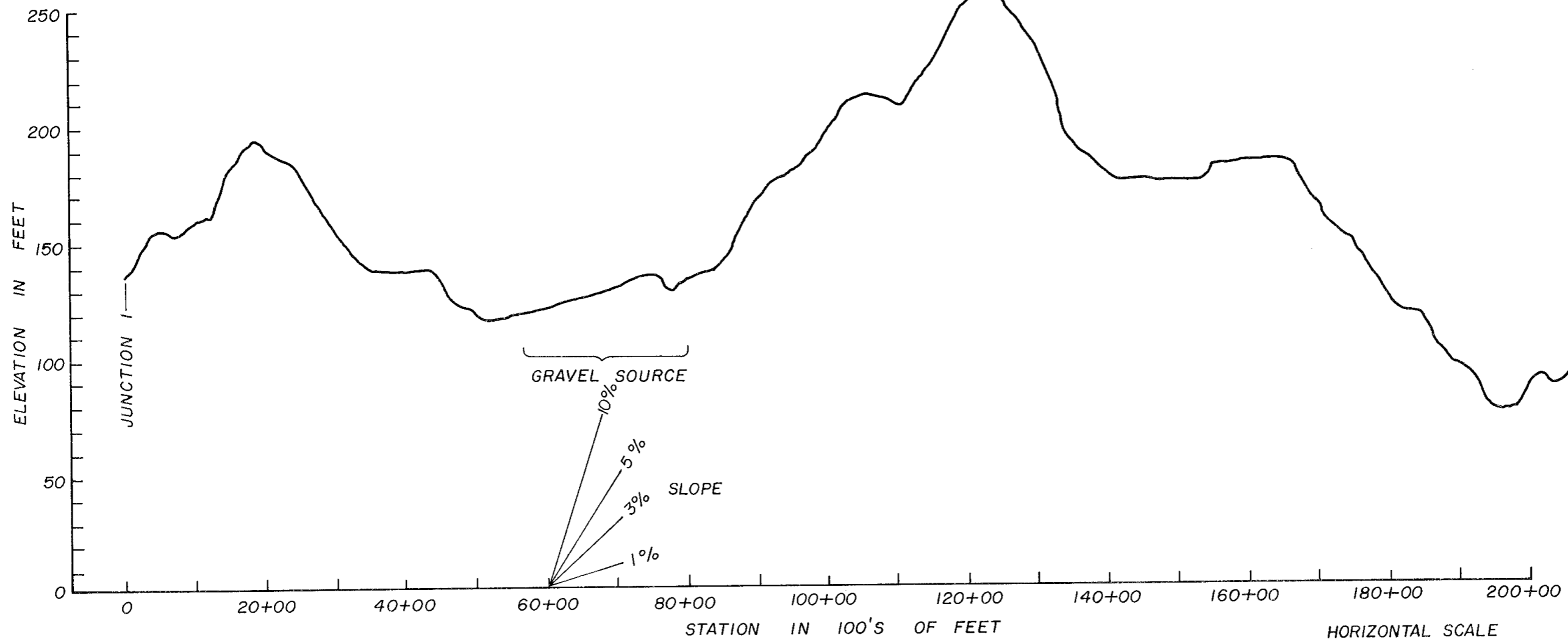



HORIZONTAL SCALE
1: 20 000

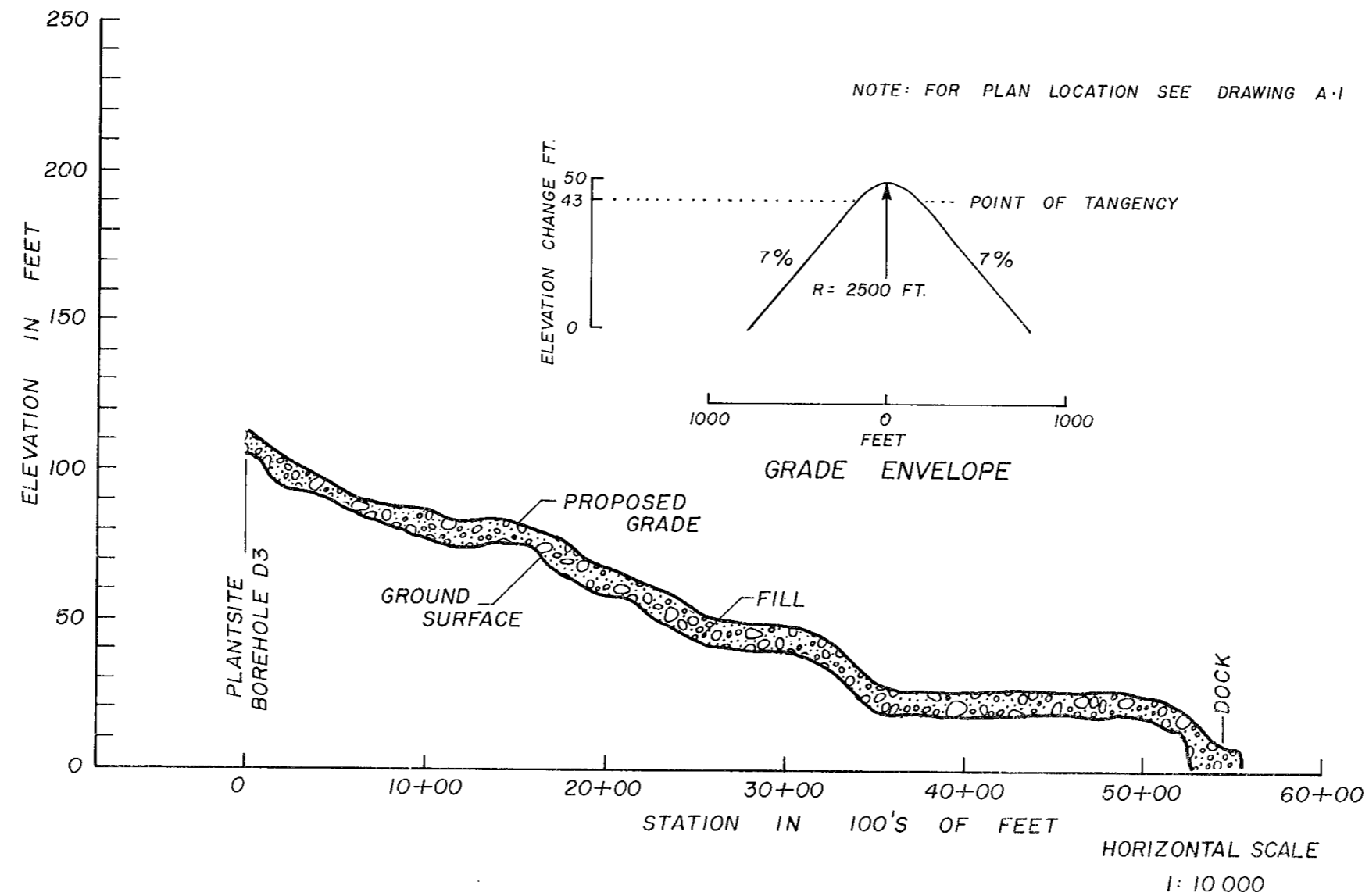
| | | |
|---|--|-----------------------------|
|  | GULF OIL CANADA LIMITED | DWG. N ^o : A.9 |
| | PARSONS LAKE GAS | DATE: 07/10/75 |
| | PLANT DEVELOPMENT | SCALE: AS SHOWN |
| | CORRIDOR PROFILE AREA A PLANTSITE TO JCT. No. 2 | JOB N ^o : 1-1140 |




| | | |
|---|--------------------------------|-----------------|
|  | GULF OIL CANADA LIMITED | DWG. No: A.10 |
| | PARSONS LAKE GAS | DATE: 07/10/75 |
| | PLANT DEVELOPMENT | SCALE: AS SHOWN |
| | CORRIDOR PROFILE | JOB No: 1-1140 |
| | JCT. No. 4 TO AREA B PLANTSITE | |



| | |
|---|-----------------------------|
| GULF OIL CANADA LIMITED PARSONS LAKE GAS PLANT DEVELOPMENT  | DWG. N ^o : A.11 |
| | DATE: 07/10/75 |
| | SCALE: AS SHOWN |
| | JOB N ^o : 1-1140 |
| CORRIDOR PROFILE | |
| JCT. No. 1 TO AREA A PLANTSITE | |

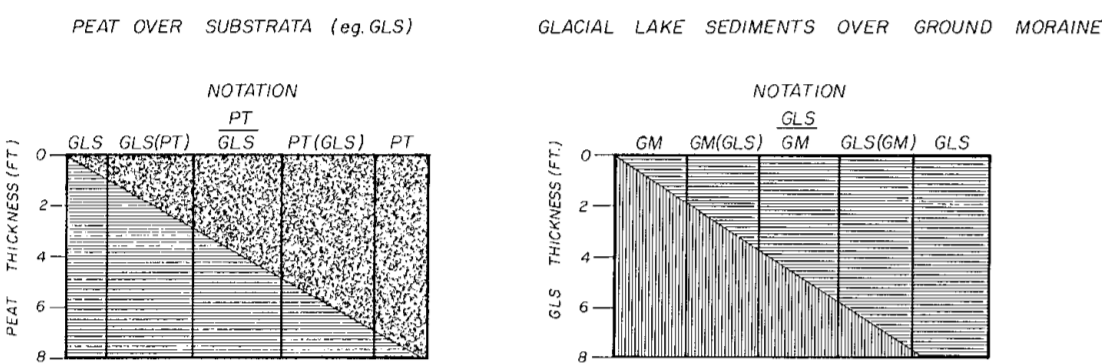


| | | |
|---|-------------------------|-----------------|
|  | GULF OIL CANADA LIMITED | DWG. No: A.12 |
| | PARSONS LAKE GAS | DATE: 07/10/75 |
| | PLANT DEVELOPMENT | SCALE: AS SHOWN |
| | ROADWAY PROFILE | JOB No: 1-1140 |
| DOCKSITE TO AREA A PLANTSITE | | |

TERRAIN CLASSIFICATION

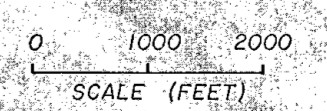
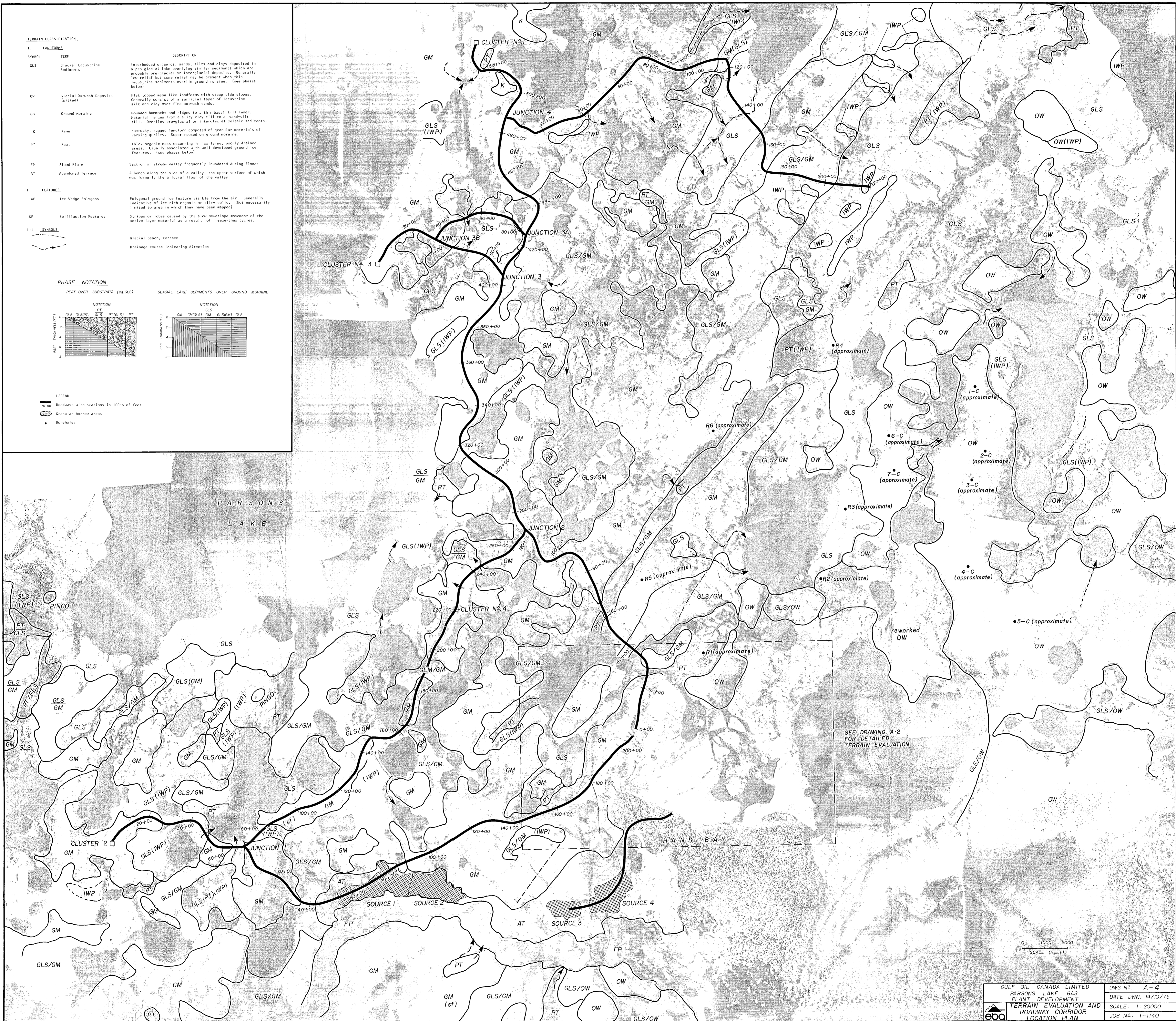
| I. LANDFORMS | | |
|--------------|--------------------------------------|--|
| SYMBOL | TERM | DESCRIPTION |
| GLS | Glacial Lacustrine Sediments | Interbedded organics, sands, silts and clays deposited in a pro-glacial lake overlying similar sediments which are probably preglacial or interglacial deposits. Generally low relief but some relief may be present when thin lacustrine sediments overlie ground moraine. (see phases below) |
| OW | Glacial Outwash Deposits | Flat topped mesa like landforms with steep side slopes. Generally consist of a surficial layer of lacustrine silt and clay over fine outwash sands. |
| GM | Ground Moraine | Rounded hummocks and ridges to a thin basal till layer. Material ranges from a silty clay till to a sand-silt till. Overlies preglacial or interglacial deltaic sediments. |
| K | Kame | Hummocky, rugged landform composed of granular materials of varying quality. Superimposed on ground moraine. |
| PT | Peat | Thick organic mass occurring in low lying, poorly drained areas. Usually associated with well developed ground ice features. (see phases below) |
| FP | Flood Plain | Section of stream valley frequently inundated during floods |
| AT | Abandoned Terrace | A bench along the side of a valley, the upper surface of which was formerly the alluvial floor of the valley |
| II. FEATURES | | |
| IWP | Ice Wedge Polygons | Polygonal ground ice feature visible from the air. Generally indicative of ice rich organic or silty soils. (Not necessarily limited to area in which they have been mapped) |
| SF | Solifluction Features | Stripes or lobes caused by the slow downslope movement of the active layer material as a result of freeze-thaw cycles. |
| III. SYMBOLS | | |
| | Glacial beach, terrace | |
| | Drainage course indicating direction | |

PHASE NOTATION



LEGEND

- Roadways with stations in 100's of feet
- Granular borrow areas
- Boreholes



| | |
|---|--------------------|
| GULF OIL CANADA LIMITED | DWG No. A-4 |
| PARSONS LAKE GAS PLANT DEVELOPMENT | DATE DWN. 14/10/75 |
| TERRAIN EVALUATION AND ROADWAY CORRIDOR LOCATION PLAN | SCALE: 1:20000 |
| | JOB No: 1-1140 |