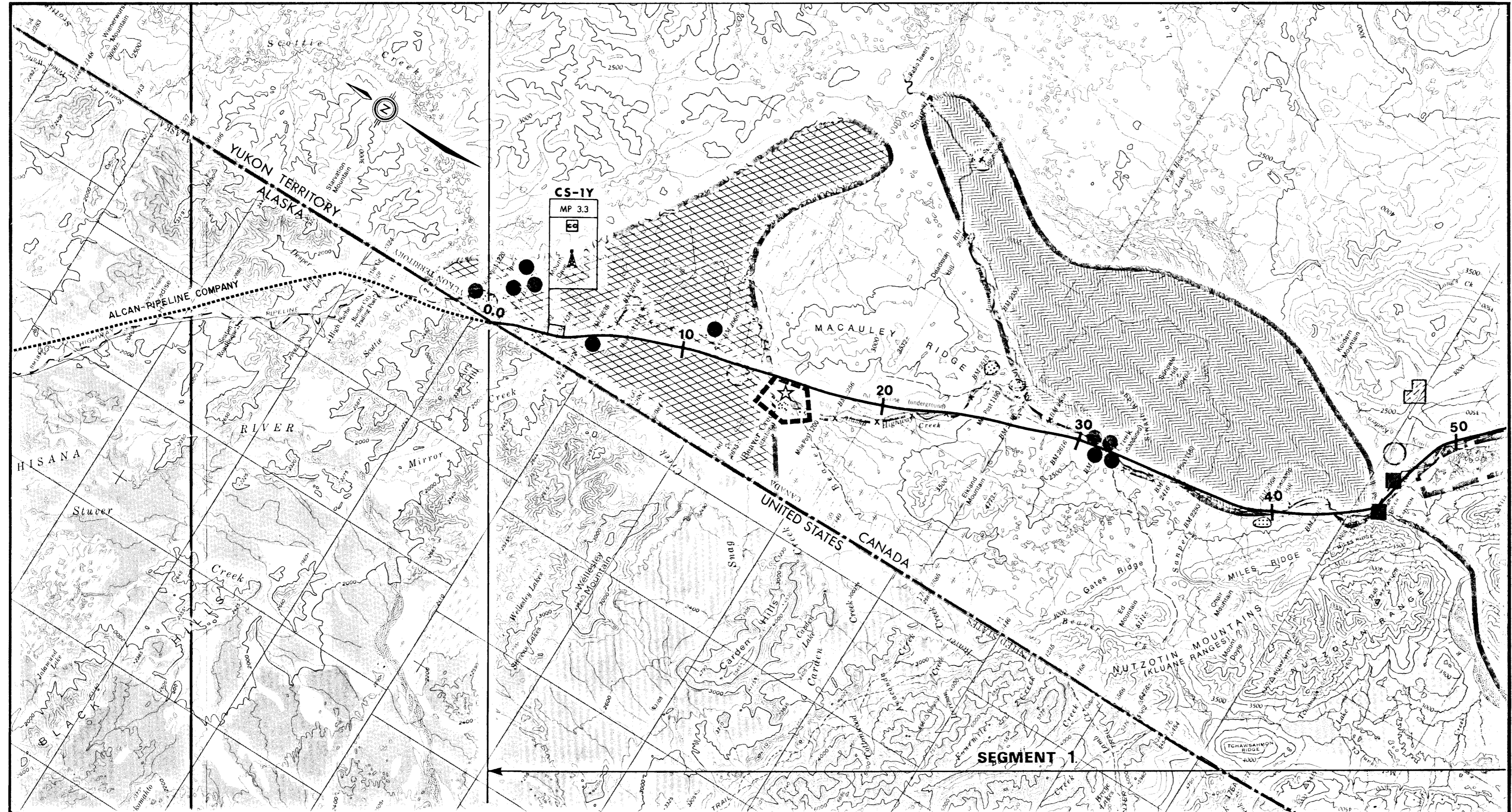


ENVIRONMENTAL ATLAS



FOOTHILLS PIPE LINES

(UKON) LTD.



LEGENDS

LAND USE and SPECIAL AREAS

SERIES ONE	PROPOSED EXISTING	
DEVELOPMENT CONTROL ZONE		GRAZING LEASES
PRIVATE LOTS		COMMERCIAL FORESTRY
HIGHWAY COMMERCIAL SERVICES		GRAZING LAND (SASK.)
AGRICULTURAL RESERVES		CULTIVATED FARM LAND (SASK.)
SERIES TWO		
LIMITED OR NO FACILITIES		MINE
ALL FACILITIES		COMMERCIAL FISHING
WATER LANDING		DOMESTIC FISHING
CNT POLE LINE		SODIUM SULPHATE PLANT (SASK.)
PROPOSED HYDRO FACILITY		EXISTING PIPELINE
MINING CLAIM		TRANSMISSION LINE
RECREATION SERIES		
CAMPGROUNDS		KLUANE NATIONAL PARK RESERVE
POTENTIAL RECREATION		PROPOSED TERRITORIAL PARKS
IBP RESERVES (PROPOSED)		PROPOSED VAL MARIE GRASSLANDS NATIONAL PARK
KLUANE GAME SANCTUARY		
TRAPPING SERIES		
PRIME TRAPPING AREA (PTA)		REGULARLY USED AREA
RESERVE FOR DISABLED AND AGED		IRREGULARLY USED AREA
	PIPELINE LEGEND	
PROPOSED PIPELINE ROUTE		COMPRESSOR STATION
TELECOMMUNICATIONS BASE STATION		COMPRESSOR STATION WITH CHILLING
ACCESS ROAD		COMPRESSOR STATION WITH AERIAL COOLERS
HEAD OFFICE		COMPRESSOR STATION WITH GAS HEATER
AREA OFFICE		

FOOTHILLS PIPELINES (YUKON) LTD.
YUKON SECTION

SERIES ONE

BACKGROUND

The following maps depict areas and sites related to community development, highway commercial services and agriculture. Specifically, the maps show locations of existing and proposed development control zones, private lots, highway commercial service centers, agricultural reserves, grazing leases, commercial forestry, grazing land (Saskatchewan) and cultivated farm land (Saskatchewan).

In some instances, resource information was not precise, and the scale of the final maps may be too gross for accurate presentation of all data locations. In other cases, due to the minor nature of sites, the mapped information is not discussed fully in the Environmental Statement.

INFORMATION SOURCES

Department of Environment. 1973. Land Use Information Series. Prepared for the Department of Indian and Northern Affairs.

Department of Northern Affairs and National Resources, Northern Administration and Land Branch Lands Division. 1957 to 1976. Land Use Information.

Department of Tourism and Information. 1976. Yukon Official Road Map. Prepared for the Government of the Yukon Territory.

Schultz and Company Ltd. 1976. Yukon Preliminary Environmental Impact Assessment of the Proposed Alcan Pipeline. Volume 1. Prepared for Gulf Interstate Engineering Company.

Slaney, F.F. and Company. 1976. Application of the Alcan Pipeline Company before the U.S. Federal Power Commission. Exhibit Z-1, Volumes 2 and 4.

Synergy West Ltd. 1974. Kluane Region Study. Prepared for the Yukon Territorial Government.

SERIES TWO

BACKGROUND

The following maps depict areas and sites related to airports, hydro facilities, communications, mining and petroleum, and fishing. Airports are mapped by type as either having limited or no facilities, all facilities, or as a water landing area. Hydro facilities mapped include existing and proposed power generating stations, and regional and local power distribution lines. The CN-CP pole and line communication is shown throughout the length of the proposed pipeline route. Mining data mapped illustrate sites of known claims, areas of exploration activity and existing mines. Petroleum pipelines are mapped where locations are known. Data relating to fishing shows known areas of commercial and domestic fishing.

Some resource data was not accurately scaled and relative locations may not be precisely mapped. Due to the lack of data, some sites discussed in the Environmental Statement may not be mapped. On the other hand, specific mapped data may appear on the map series but is not fully discussed in the accompanying report.

INFORMATION SOURCES

CN-CP Telecommunications. 1976. Yukon communications line and repeater station locations.

Department of Environment. 1973. Land Use Information Series. Prepared for the Department of Indian and Northern Affairs.

Department of Northern Affairs and National Resources, Northern Administration and Lands Branch, Lands Division. 1957 to 1976. Land Use Information.

Northern Canada Power Commission. 1976. Aishihik power station and distribution lines.

Rand McNally and Company. 1970. Yukon Territory Road and Air Facilities Map.

Schultz and Company Ltd. 1976. Yukon Preliminary Environmental Impact Assessment of the Proposed Alcan Pipeline. Volume 1. Prepared for Gulf Interstate Engineering Company.

Slaney, F.F. and Company. 1976. Application of the Alcan Pipeline Company before the U.S. Federal Power Commission. Exhibit Z-1, Volumes 2 and Volume 4.

Yukon Electric. 1976. Yukon power distribution lines.

Fifth Northern Resources Conference. 1975. Hydro facilities.

RECREATION

BACKGROUND

The following map series records the location of sites and areas related to campgrounds, natural reserves, and parks. Campgrounds are mapped by site specific location while potential campgrounds and recreation areas are more generally located and rated according to their potential. Rating classifications, based on Department of Environment Land Directorate, are described in the Environmental Atlas. Natural reserves include the Kluane Game Sanctuary and a number of proposed International Biological Program (IBP) sites. Parks include the Kluane National Park Reserve, proposed Yukon Territorial Parks and the proposed Val Marie Grasslands Park, in Saskatchewan.

In the case of potential recreation sites, proposed Territorial Parks, and IBP sites, background data generally located sites under consideration. As well, the illustrated boundaries of the Kluane National Park Reserve, which have been generalized from existing data, are currently being officially surveyed.

INFORMATION SOURCES

Bridge, R. 1976. The Camper's Guide to Alaska, the Yukon and Northern British Columbia.

Department of Environment. 1973. Land Use Information Series. Prepared for the Department of Indian and Northern Affairs.

Department of Tourism and Information. 1972. Yukon Official Road Map. Prepared for the Government of the Yukon Territory.

Department of Tourism and Renewable Resources. 1975. Regional Parks, Province of Saskatchewan.

Joint Federal-Provincial Committee. 1975. A Proposed Grasslands National Park.

Parks Canada. n.d. Discussions with Parks Canada staff in Winnipeg regarding Kluane National Park Reserve.

Schultz and Company Ltd. 1976. Preliminary Environmental Impact Assessment of the Proposed Alcan Pipeline. Volume 1. Prepared for Gulf Interstate Engineering Company.

Slaney, F.F. and Company. 1976. Application of the Alcan Pipeline Company before the U.S. Federal Power Commission. Exhibit Z-1, Volumes 2 and Volume 4.

Synergy West Ltd. 1974. Kluane Region Study. Prepared for the Yukon Territorial Government.

Fifth Northern Resources Conference. 1975. Proposed Territorial Parks.

TRAPPING

The following map series generally locates predominant trapping areas in the Yukon. Following is the rating description used in classifying trapping areas into four types.

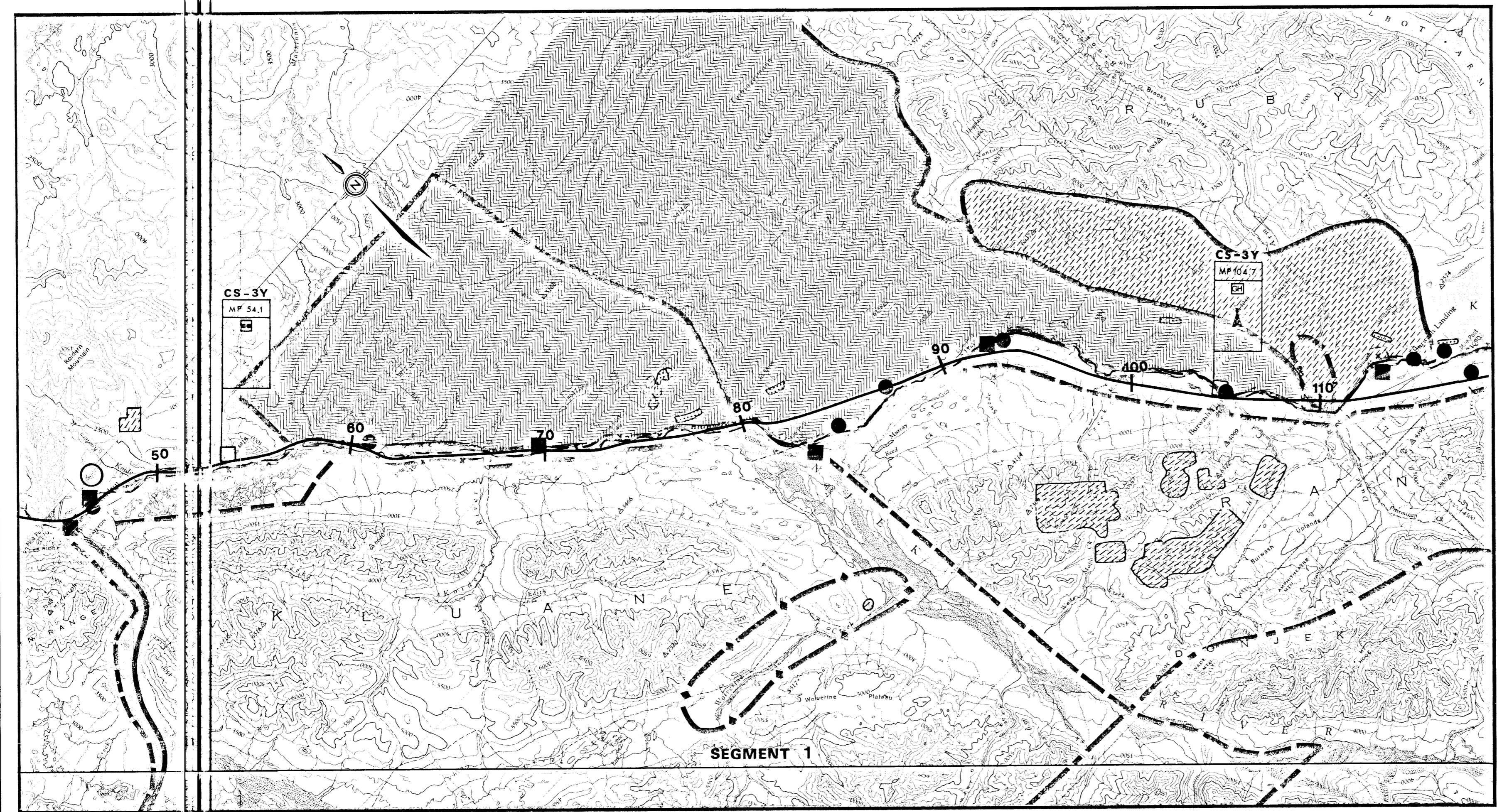
1. Prime Trapping Areas: Used extensively during winter and spring.
2. Regularly Used Areas: Used on a regular, but not intensive basis during winter and spring.
3. Irregularly Used Areas: Used lightly or only during specific times of the trapping season or to trap specific animals.
4. Reserved Areas: For the use by elderly or disabled persons. Due to the general nature of source data, the boundaries illustrated should be viewed as non-specific.

INFORMATION SOURCES

Department of Environment. 1973. Land Use Information Series. Prepared for the Department of Indian and Northern Affairs.

Schultz and Company Ltd. 1976. Yukon Preliminary Environmental Impact Assessment of the Proposed Alcan Pipeline. Volume 1. Prepared for Gulf Interstate Engineering Company.

Slaney, F.F. and Company. 1976. Application of the Alcan Pipeline Company before the U.S. Federal Power Commission. Exhibit Z-1, Volumes 2 and Volume 4.



LEGENDS

LAND USE and SPECIAL AREAS

SERIES ONE

- DEVELOPMENT CONTROL ZONE
- PRIVATE LOTS
- HIGHWAY COMMERCIAL SERVICES
- AGRICULTURAL RESERVES

- PROPOSED (dashed line)
- EXISTING (solid line)
- (black dot)
- (black square)
- ▨ (diagonal hatching)

SERIES TWO

- LIMITED OR NO FACILITIES
- ALL FACILITIES
- WATER LANDING
- CNT POLE LINE
- PROPOSED HYDRO FACILITY
- MINING CLAIM

- (open circle)
- ⊙ (circle with dot)
- ⊕ (circle with cross)
- x-x- (dashed line with x's)
- ★ (star)
- ▨ (diagonal hatching)

RECREATION SERIES

- CAMPGROUNDS
- POTENTIAL RECREATION
- IBP RESERVES (PROPOSED)
- KLUANE GAME SANCTUARY

- (black dot)
- ▨ (diagonal hatching)
- (dashed line)
- (dashed line)

TRAPPING SERIES

- PRIME TRAPPING AREA (PTA)
- RESERVE FOR DISABLED AND AGED

- ▨ (diagonal hatching)
- ▨ (diagonal hatching)

- GRAZING LEASES (diagonal hatching)
- COMMERCIAL FORESTRY (diagonal hatching)
- GRAZING LAND (SASK.) (diagonal hatching)
- CULTIVATED FARM LAND (SASK.) (diagonal hatching)

- MINE (circle with dot)
- COMMERCIAL FISHING (fish icon)
- DOMESTIC FISHING (fish icon)
- SODIUM SULPHATE PLANT (SASK.) (factory icon)

- EXISTING PIPELINE (dashed line)
- TRANSMISSION LINE (dashed line)

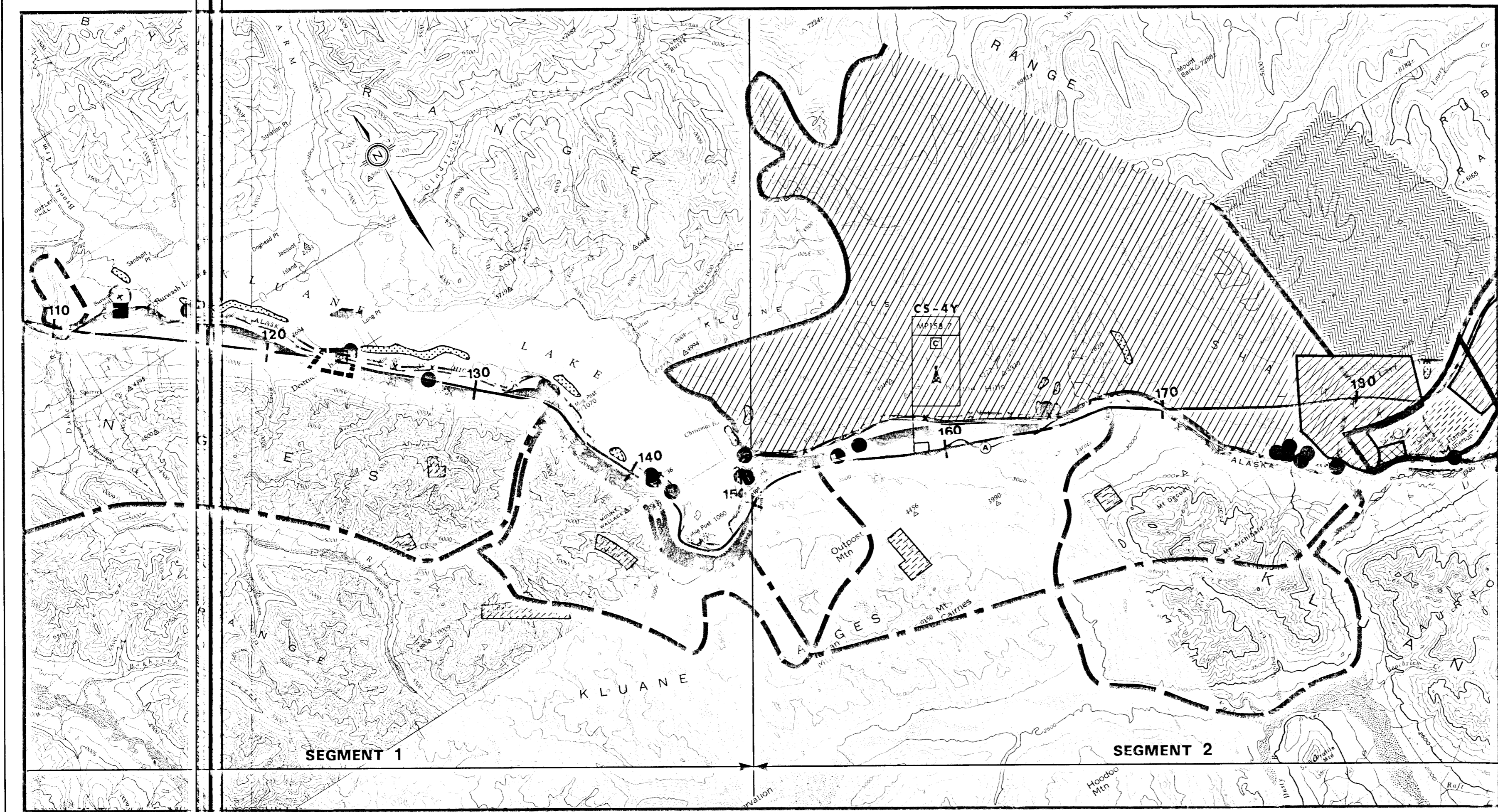
- KLUANE NATIONAL PARK RESERVE (dashed line)
- PROPOSED TERRITORIAL PARKS (dashed line with diamond)
- PROPOSED VAL MARIE GRASSLANDS NATIONAL PARK (dashed line with diamond)

PIPELINE LEGEND

- PROPOSED PIPELINE ROUTE (dashed line)
- TELECOMMUNICATIONS BASE STATION (tower icon)
- ACCESS ROAD (solid line)
- HEAD OFFICE (star icon)
- AREA OFFICE (star icon)

- REGULARLY USED AREA (diagonal hatching)
- IRREGULARLY USED AREA (diagonal hatching)
- COMPRESSOR STATION (C in box)
- COMPRESSOR STATION WITH CHILLING (CC in box)
- COMPRESSOR STATION WITH AERIAL COOLERS (AC in box)
- COMPRESSOR STATION WITH GAS HEATER (CH in box)

FOOTHILLS PIPE LINES (YUKON) LTD.
YUKON SECTION

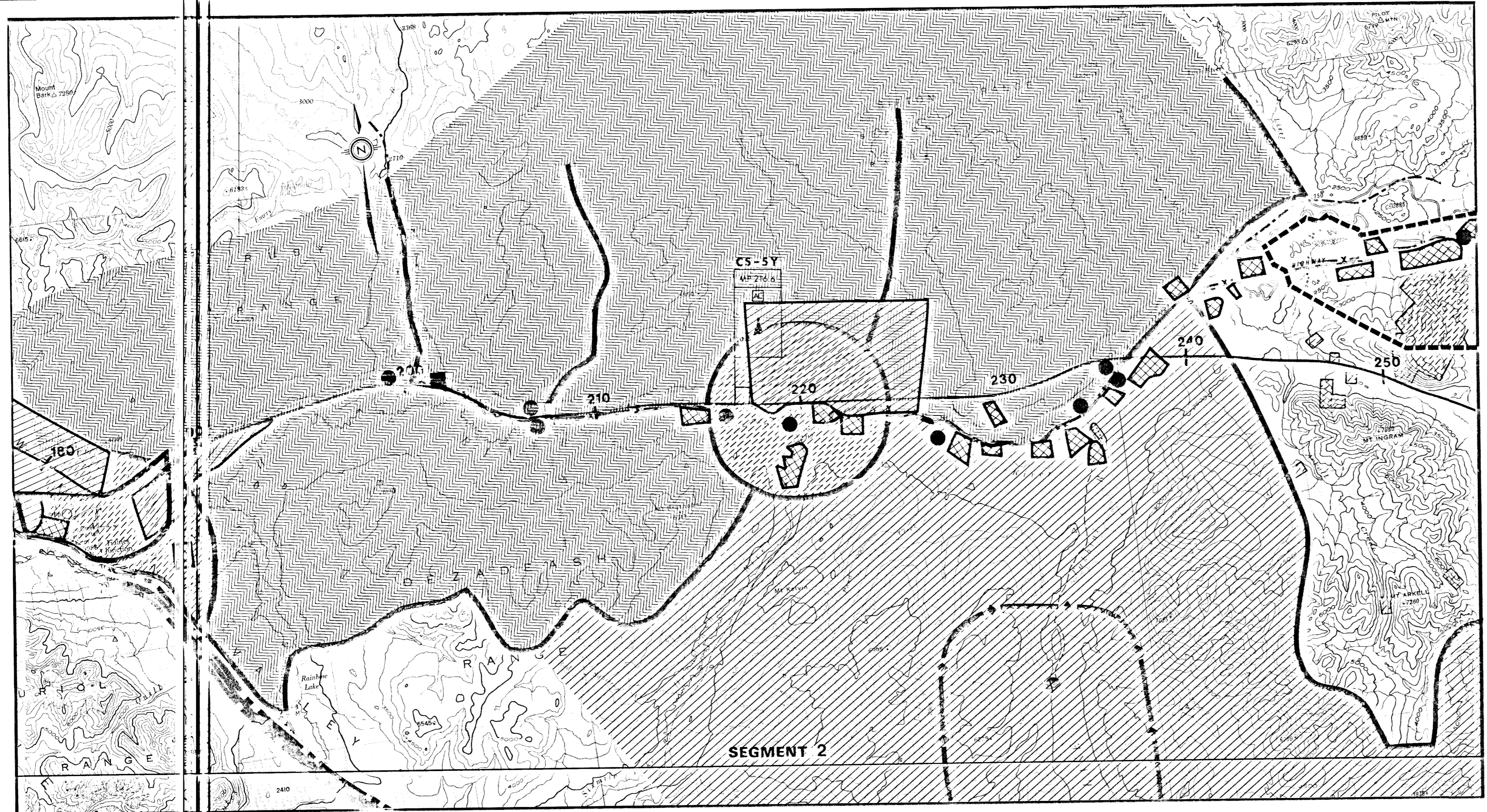


LEGENDS

LAND USE and SPECIAL AREAS

SERIES ONE	PROPOSED	
DEVELOPMENT CONTROL ZONE		GRAZING LEASES
PRIVATE LOTS		COMMERCIAL FORESTRY
HIGHWAY COMMERCIAL SERVICES		GRAZING LAND (SASK.)
AGRICULTURAL RESERVES		CULTIVATED FARM LAND (SASK.)
SERIES TWO	EXISTING	
LIMITED OR NO FACILITIES		MINE
ALL FACILITIES		COMMERCIAL FISHING
WATER LANDING		DOMESTIC FISHING
CNT POLE LINE		SODIUM SULPHATE PLANT (SASK.)
PROPOSED HYDRO FACILITY		EXISTING PIPELINE
MINING CLAIM		TRANSMISSION LINE
RECREATION SERIES		
CAMPGROUNDS		KLUANE NATIONAL PARK RESERVE
POTENTIAL RECREATION		PROPOSED TERRITORIAL PARKS
IBP RESERVES (PROPOSED)		PROPOSED VAL MARIE GRASSLANDS NATIONAL PARK
KLUANE GAME SANCTUARY		
TRAPPING SERIES		
PRIME TRAPPING AREA (PTA)		REGULARLY USED AREA
RESERVE FOR DISABLED AND AGED		IRREGULARLY USED AREA
	PIPELINE LEGEND	
PROPOSED PIPELINE ROUTE		COMPRESSOR STATION
TELECOMMUNICATIONS BASE STATION		COMPRESSOR STATION WITH CHILLING
ACCESS ROAD		COMPRESSOR STATION WITH AERIAL COOLERS
HEAD OFFICE		COMPRESSOR STATION WITH GAS HEATER
AREA OFFICE		

FOOTHILLS PIPE LINES (YUKON) LTD.
YUKON SECTION



LEGENDS

LAND USE and SPECIAL AREAS

SERIES ONE	PROPOSED EXISTING	
DEVELOPMENT CONTROL ZONE		GRAZING LEASES
PRIVATE LOTS		COMMERCIAL FORESTRY
HIGHWAY COMMERCIAL SERVICES		GRAZING LAND (SASK.)
AGRICULTURAL RESERVES		CULTIVATED FARM LAND (SASK.)
SERIES TWO		
LIMITED OR NO FACILITIES		MINE
ALL FACILITIES		COMMERCIAL FISHING
WATER LANDING		DOMESTIC FISHING
CNT POLE LINE		SODIUM SULPHATE PLANT (SASK.)
PROPOSED HYDRO FACILITY		EXISTING PIPELINE
MINING CLAIM		TRANSMISSION LINE
RECREATION SERIES		
CAMPGROUNDS		KLUANE NATIONAL PARK RESERVE
POTENTIAL RECREATION		PROPOSED TERRITORIAL PARKS
IBP RESERVES (PROPOSED)		PROPOSED VAL MARIE GRASSLANDS NATIONAL PARK
KLUANE GAME SANCTUARY		
TRAPPING SERIES		
PRIME TRAPPING AREA (PTA)		REGULARLY USED AREA
RESERVE FOR DISABLED AND AGED		IRREGULARLY USED AREA
PIPELINE LEGEND		
PROPOSED PIPELINE ROUTE		COMPRESSOR STATION
TELECOMMUNICATIONS BASE STATION		COMPRESSOR STATION WITH CHILLING
ACCESS ROAD		COMPRESSOR STATION WITH AERIAL COOLERS
HEAD OFFICE		COMPRESSOR STATION WITH GAS HEATER
AREA OFFICE		

FOOTHILLS PIPE LINES (YUKON) LTD.
YUKON SECTION

SEGMENT 2